

## Procedure 6.1 - Troubleshooting the Ribbon Cable

1. With the lift set at level 1, turn off the EFX 544 with the circuit breaker.

### **WARNING**

Before continuing with this procedure, review the Warning and Caution statements listed in Section One.

2. Remove the front cover.
3. Attach the wrist strap to your arm, then connect the ground lead of the wrist strap to the EFX 544 frame.
4. Disconnect the ribbon cable from the lower PCA.
5. Remove the screws that secure the upper display module assembly to the upper frame member.

### **CAUTION**

When you perform the next step, tape the ribbon cable to the EFX 544 to prevent it from falling into the upper frame member.

6. Disconnect the ribbon cable from the upper PCA. Set aside the upper display module.
7. Connect the spare ribbon cable between the upper PCA and the lower PCA.
8. Check the operation of the EFX 544 as described in Section Four.
9. If the EFX 544 operates correctly with the spare ribbon cable...

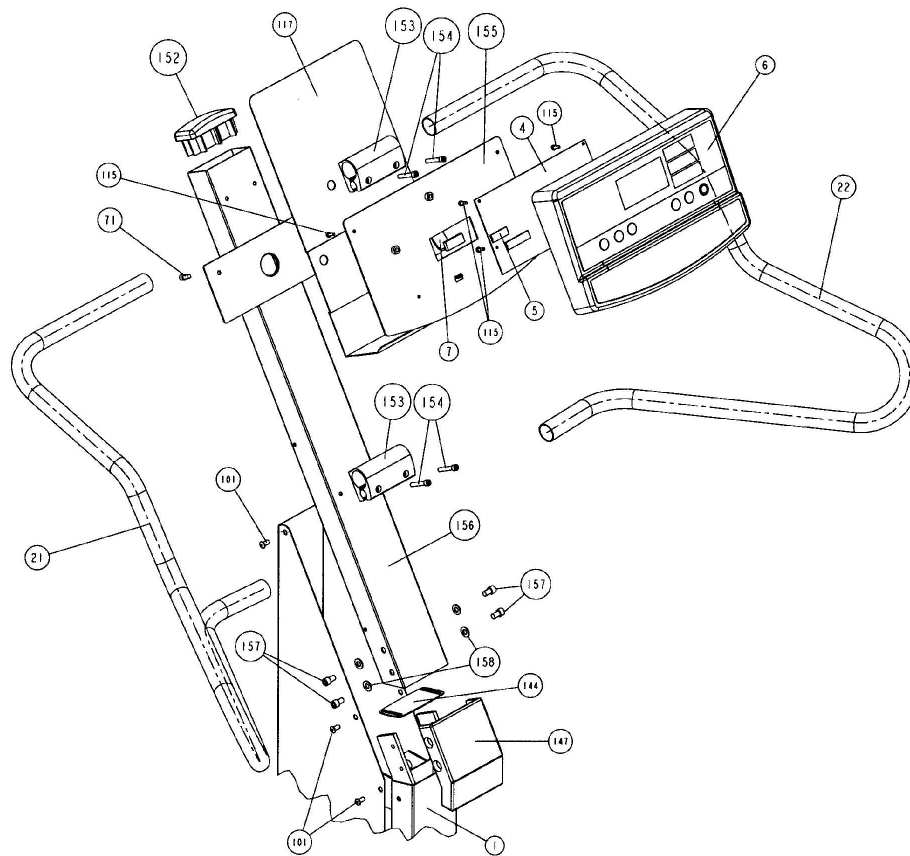
#### **THEN...**

Install a new ribbon cable on the EFX 544 as described in Procedure 7.5.

#### **OTHERWISE...**

Continue with the next step.

10. Turn off the EFX 544 with the circuit breaker.
11. Disconnect the spare ribbon cable from the upper and lower PCAís.
12. Connect the original ribbon cable to the upper and lower PCAís.

**Diagram 6.1 - Upper Column Assembly**

13. Position the upper display module on the upper frame member (see Diagram 6.1). Install the screws that secure the display module to the frame member.
14. Remove the ground lead of the wrist strap from the EFX 544 frame, then remove the wrist strap from your arm.
15. Re-install the front cover as described in Procedure 7.1, then check the operation of the EFX 544 as described in Section Four.